

Are You Lonesome Tonight Technical Specifications and Requirements

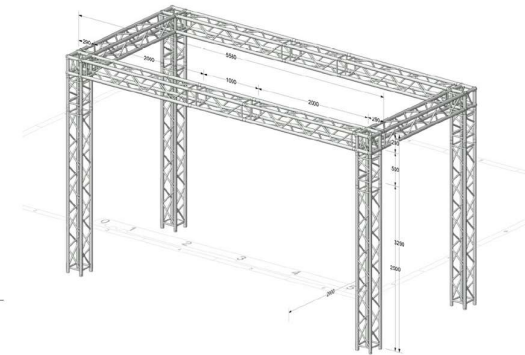
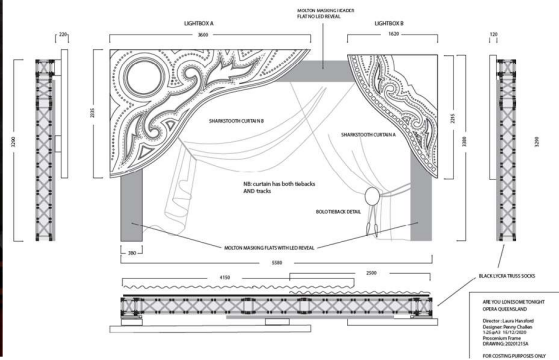
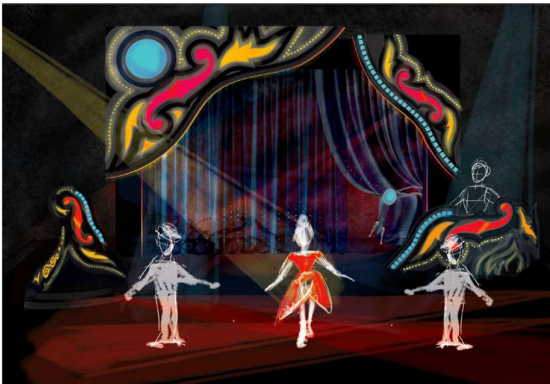
touring party (8)

Tour Manager
LX Technician
Audio Technician
3x Artist
MD/Pianist

transport

6 tonne truck; 2 x 8 seat people mover; (no luggage trailer)

equipment touring with company: set / furniture / props



set

Truss arch assembly 5580 x 2580 x 3290mm
2 x lightboxes attached to truss
2 x lightboxes downstage of arch as piano surround. O.P set piece
Star cloth
2 x Sharks tooth gauze

properties/dressing

1 x roadcase containing hand props



Are You Lonesome Tonight
Technical Specifications and Requirements

costumes	base costume plus additions for male artist x 3 2 x base costume plus additions for female artist x 1
audio	1 x digital keyboard; 2 x guitars; 1 x bass guitar & amp; we are carrying a touring sound system - 1 x L'Accoustic A15 and SB118 per side, 4 Beta3 ES208/50 Foldback Speaker, Midas Pro 1 surface Where inhouse equipment is available, the tour will prioritise use of the house sound rig 5 x Sennheiser Wireless Microphone System (Handheld & Headset) 3 x Sennheiser Wireless Instrument System 1 x DPA D:Vote 4099 Instrument Microphone with Violin Mount 1 x Radial Pro D2
lighting	In all venues we require 32amp 3phase power required within 20m of stage We are carrying a small touring lighting rig however where inhouse equipment is available, the tour will prioritise use of the house lighting rig 8 x ACME Stage Par BL-100 RGBW ip65 8 x ACME Tour Bar 1010 RGBW - ip65 2 x Selecon Pacific 23/50 GrandMa2 on PC wing Touring equipment - 12 x Acme Stage Par 400Z IP65
miscellaneous	1 x music stands with sconces company & sponsor pull up banners
staff required	bump in 2 x crew to assist in the unload and set build OQ touring tech/operator - will direct local crew performance venue facilitator / assistant bump out venue facilitator / assistant 2 x crew to assist bump out & truck pack (Note this will be after standard business hours)
estimated bump in duration:	3 - 4 hours (plus sound check/familiarisation rehearsal)
estimated bump out duration:	1.5 - 2.5 hours - depending on access and lx rig